



## $\beta$ -Tubulin Mouse Monoclonal Antibody

**Cat NO. :** TB002-M

**Size:** 50  $\mu$ l

**Background:** Microtubules are constituent parts of the mitotic apparatus, cilia, flagella, and elements of the cytoskeleton. They consist principally of 2 soluble proteins, alpha- and beta-tubulin, each of about 55,000 kDa. Antibodies against beta Tubulin are useful as loading controls for Western Blotting. However it should be noted that levels of  $\beta$ -Tubulin may not be stable in certain cells. For example, expression of  $\beta$ -Tubulin in adipose tissue is very low and therefore  $\beta$ -Tubulin should not be used as loading control for these tissues.

**Isotype:** IgG1

**Immunogen:** Full-length  $\beta$ -Tubulin protein of human.

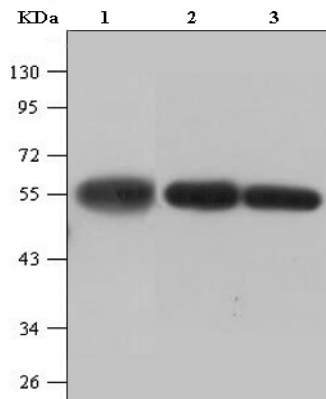
**Formulation:** Liquid, 1mg/ml IgG in PBS, pH 7.4, containing 0.02% sodium azide and 50% glycerol.

**Recommended applications:** WB 1:2000-1:5000; IHC 1:200; IF 1:200; Optimal dilutions/concentrations should be determined by the end user; Not yet tested in other applications.

**Reactivity:** Human, Monkey, Mouse, Rat, Rabbit, hamster, chicken

**Storage:** Store at  $-20^{\circ}\text{C}$  or below. Avoid repeated freezing and thawing cycles.

**Note:** For research use only, not for use in diagnostic procedures.



Western blot analysis of Hela cell lysate(lane1) , Rat brain tissue lysate(lane2) and Mouse brain tissue lysate(lane3) with  $\beta$ -Tubulin mouse mAb diluted at 1:5000.